

Monitoring system introduction

We have two systems, OSS (<http://oss.growatt.com/index?lang=en>) is for installers. ShineServer (<https://server.growatt.com/login?lang=en>) is for end-customers.

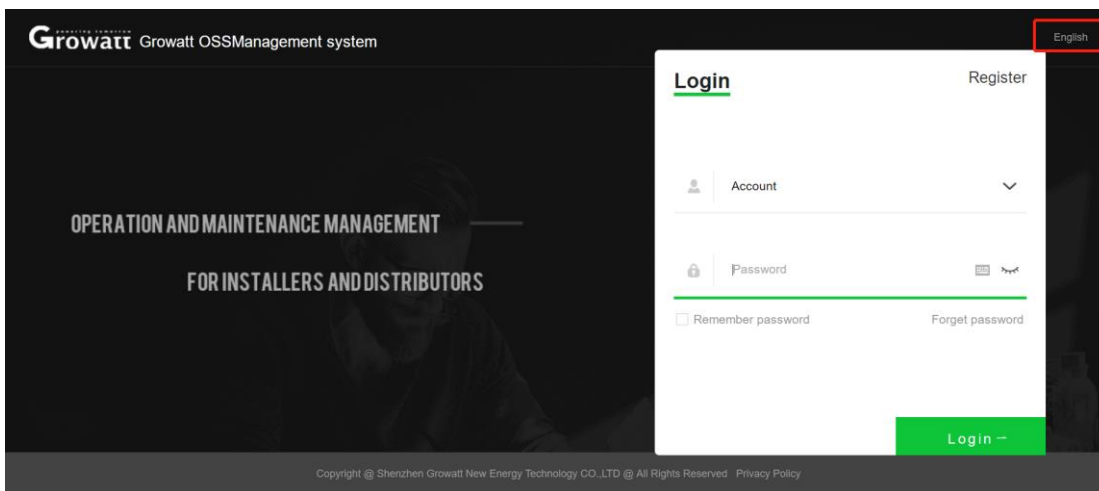
However, end-customers need to fill in the installer code when registering with ShineServer. So Installer need to give your installer code to the end-customers. Enter this code when end-customers is registered, and you can see the device of end-customers in your installer account, and you can set the device.

1, OSS System

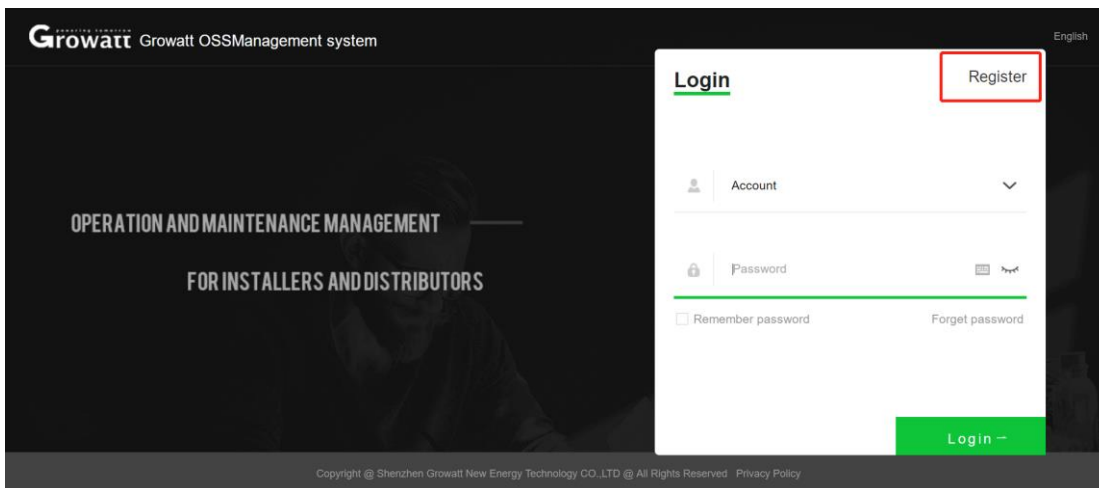
A, If you are an installer, first you need to register in the OSS system.

Open the OSS page and select English.

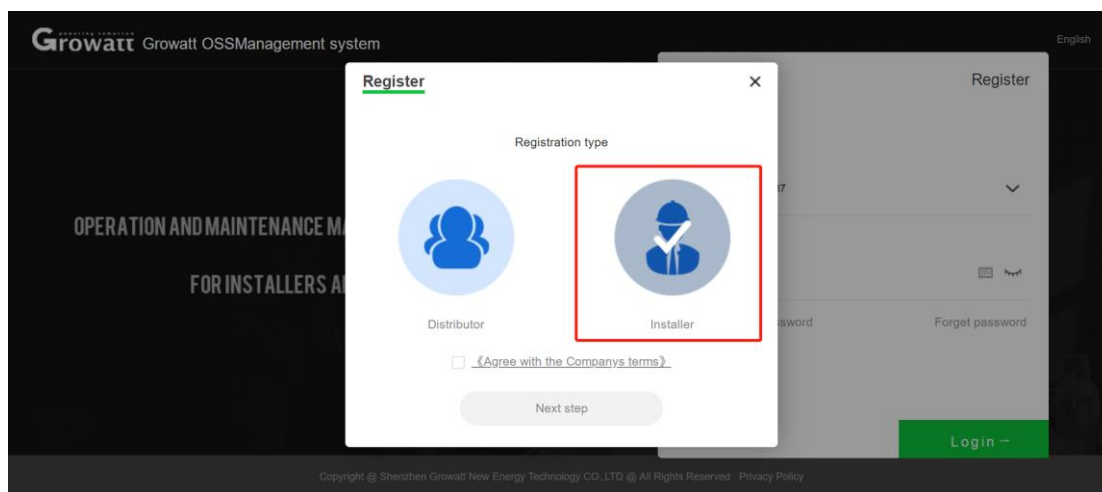
<http://oss.growatt.com/login?lang=en>



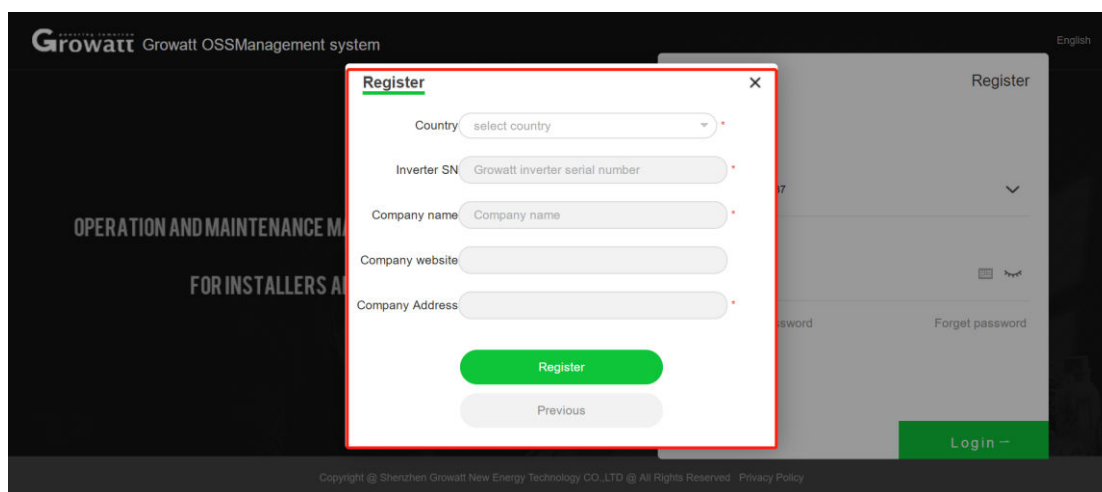
B, Click to register



C, Choose Installer .



D, Fill in and register the information.



E, Improve personal information

Complete your personal information ✕

Account name

Set password *

Confirm password *

Contact person

Email

E-mail code

Phone number * ⓘ

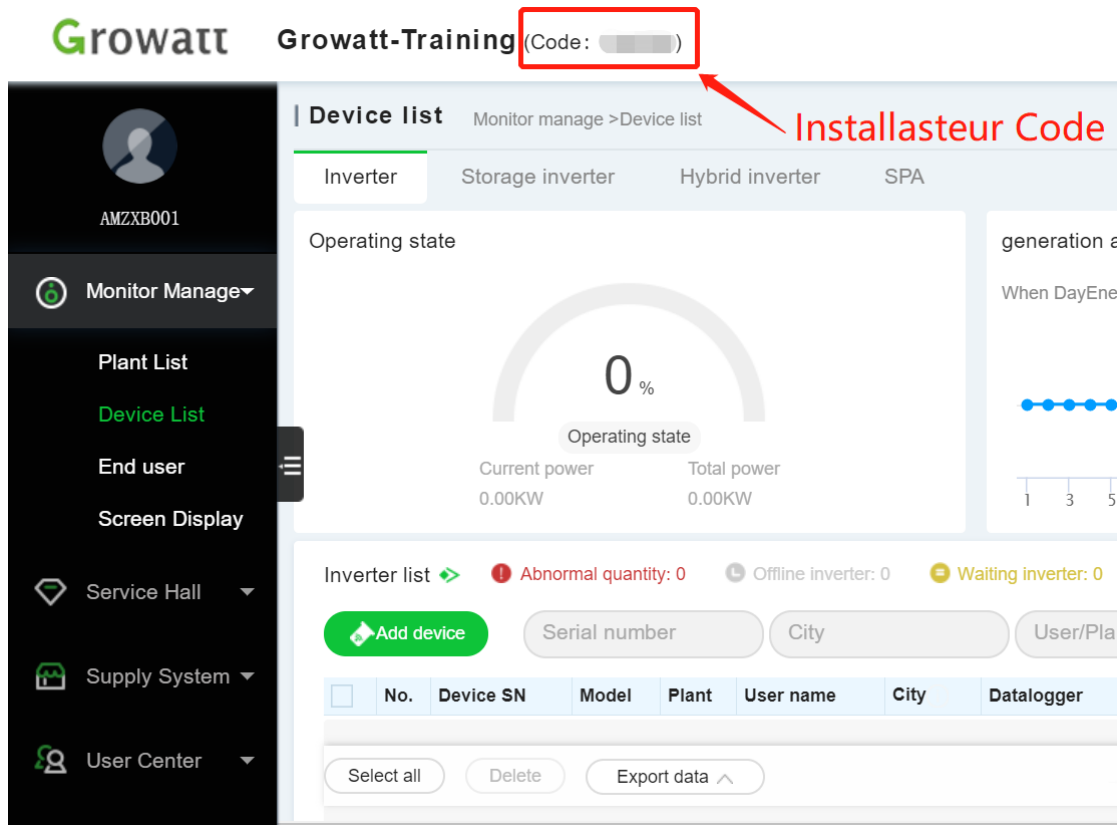
position

F, Wait for the review. After the review is successful, you will get the installer account and installer code by email.

Note: The installer account is not equal to the installer code.

2, Introduction to OSS.

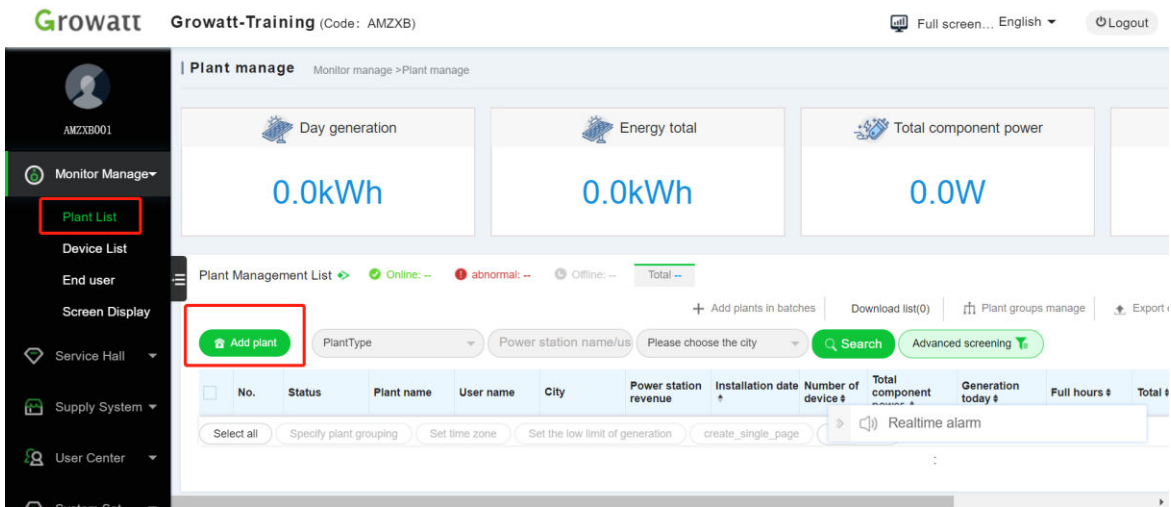
A, When end customers register with ShineServer, they need to fill in the installer code. So Installer need to give your installer code to the end-customers.



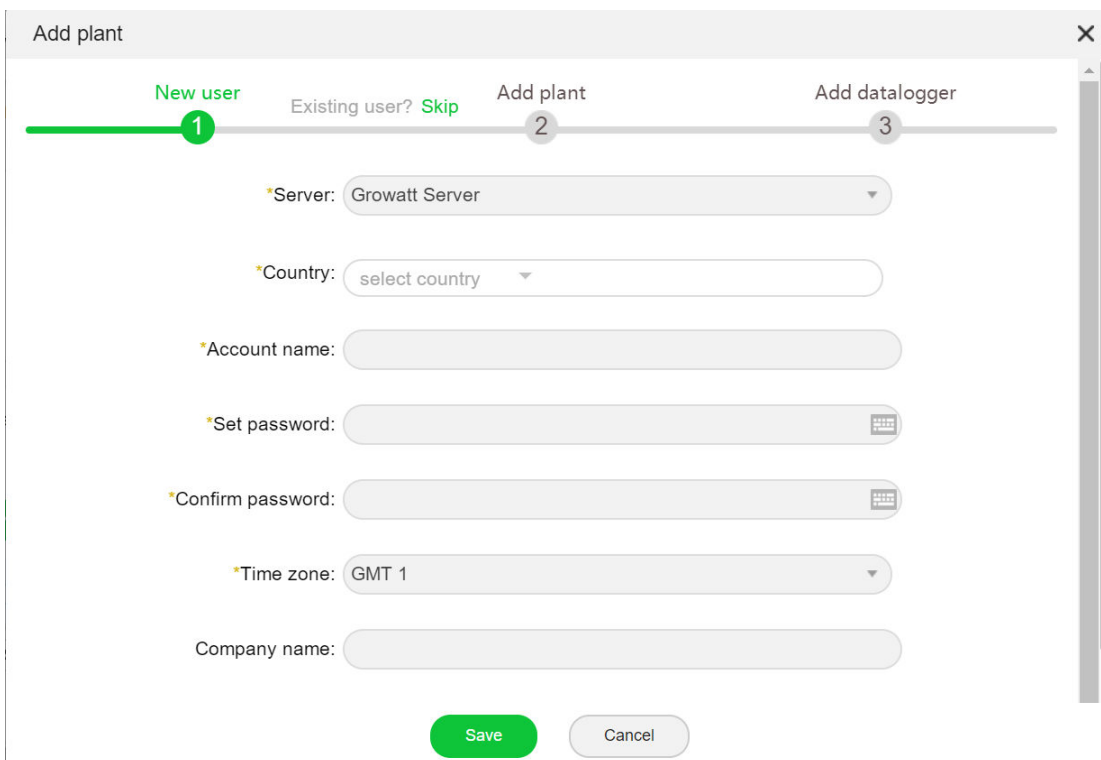
B, Plant List

Here can help end users to create power plants.

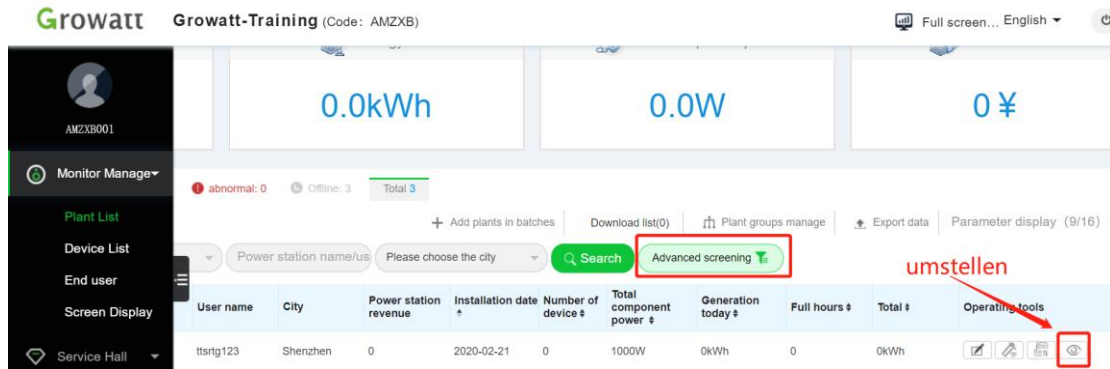
B1. Click „Add plant“ .



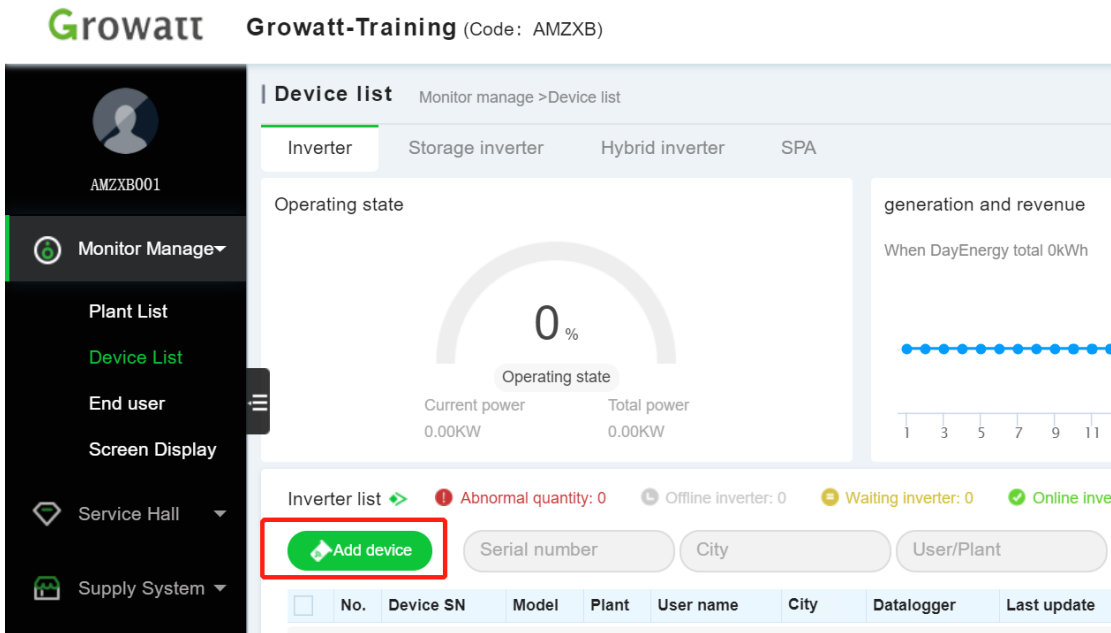
B2.Fill in user information. Please select “Growatt Server” for the server.



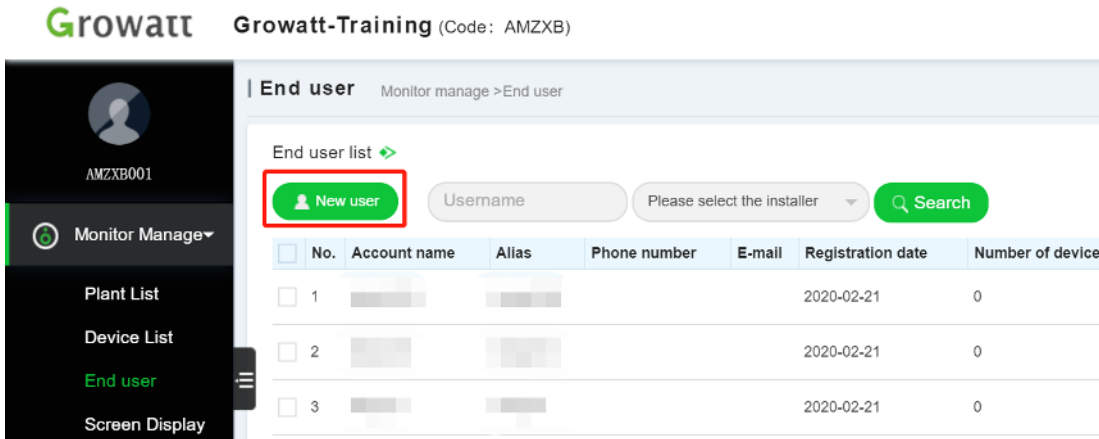
B3. Search for power stations. Enter the inverter serial number in the advanced filter. Find the corresponding power station, click eyes, you can manage it.



C, Device List. The inverter can be added here.



D, End UserEnd users can be added here.



If you log in with an installer account through OSS and create a customer account from there, it will automatically link to your installer account. In this case, you do not have to enter the installer code.

After creating a end-customer account through the ShinePhone app or ShineServer (server.growatt.com), the end customer must enter the installer code. The end customer get this code from installer. When the end customer fills in the installer code, the end account will be automatically added under the installer account of this code.

Benutzer Installateur Vertriebspartner

Land

Benutzernamen Maximal 30 Zeichen
geben Sie bitte Benutzernamen ein

Passwort Nicht weniger als 6 Stellen

Passwort bestätigen Nicht weniger als 6 Stellen

Sprache German

Telefonnummer

E-Mail

Installationscode bitte Installateur Code eingeben

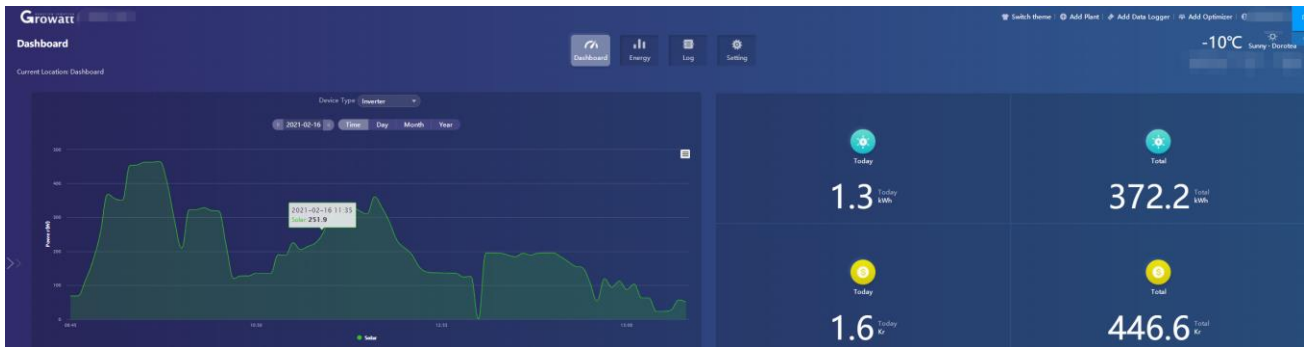
Zustimmung zu den Begriffen

Next

3, Introduction to ShineServer (server.growatt.com)

ShineServer (<https://server.growatt.com/login?lang=en>) is for end-customers.

A, End customers can observe the power generation in shinesserver.



B, End customers can set parameters in shinesserver, such a anti-reflux.

Inverter Setting

Information

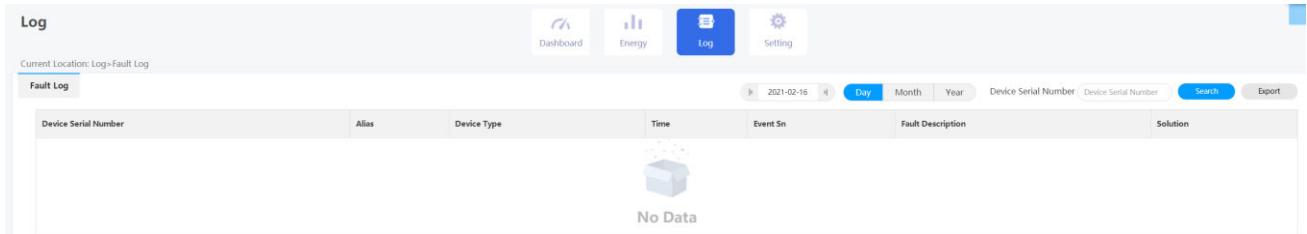
Device Serial Number: [redacted] Alias: [redacted]
 Data Logger: [redacted] Property: DH1.0/djaa9906/A1B0D1T0PFU1MCS4

Command

- Set Pv On/Off [Boot]
- Set Save Pf Command [Off]
- Set Active Power Rate [100 %]
- Set Reactive Power Rate [Over] [255 %]
- Set Pf Value (-0.8 ~ -1/0.8 ~ 1) [1.0]
- Set Time [2021-02-16 07:37:51]
- Set Grid Voltage High [442.2]

Please Enter Key To Save [Yes] [Advanced Set] [Cancel]

C, When the machine fails, the customer can view the error in the log, so as to check the machine accordingly.



D, Customers can also view more surprising data.

