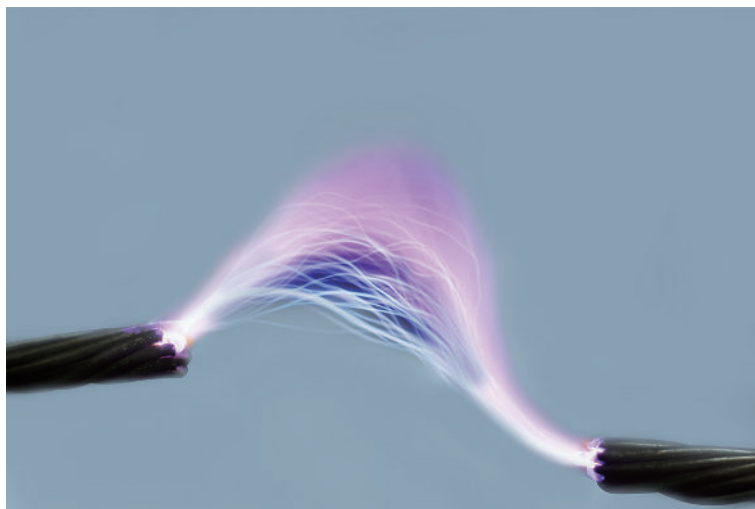


# HUAWEI AI BOOST AFCI





## DC Arc Fault Has Been Found the Major Cause of Fire in PV System

### What is Arc Fault ?

Electrical breakdown of air that produces a prolonged electrical discharge.

### What is the Harm of Arc Fault in PV System ?

-  Temperature reaching above 3000°C, easily causes fires
-  Pose risk to installer and firefighter under high DC voltage

### Where Does Arc Fault Occur in PV System ?

Poor welded PV module junction box, broken PV cables, loosen or incompatible PV connectors, etc.

## HUAWEI AI BOOST AFCI to Proactively Mitigate Fire Risk

### What is AI Boost AFCI (Arc Fault Circuit Interrupter)?

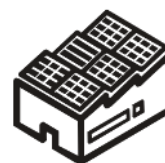
HUAWEI inverter keeps self-learning new arc feature to accurately protect system from arc fault, even under complex noise.



### Residential AFCI Solution

|  | HUAWEI   | Others |
|--|--|--------|
| Arc fault detection accuracy <sup>1</sup>          | 99.9%  | 50-60% |
| Arc fault protection cycle-time                    | 300-400 ms   | 2.5 s  |
| Module level arc fault position alert <sup>2</sup> | Yes  | No     |
| Support Inverter Models:                           | SUN2000-3/4/5/6/8/10KTL-M0<br>New:<br>SUN2000-2/3/3.68/4/4.6/5/6KTL-L1 <sup>3</sup><br>SUN2000-3/4/5/6/8/10KTL-M1 <sup>4</sup> |        |

1. With or without power optimizer
2. Full power optimizer required.
3. Available in 2020. Q2
4. Available in 2020. Q3



### Commercial and Industrial AFCI Solution

|  | HUAWEI   | Others         |
|--|--|----------------|
| Arc fault detection accuracy               | 99.9%  | 50-60%         |
| Arc fault protection cycle-time            | 300-400 ms   | 2.5 s          |
| Max distance of arc detection <sup>1</sup> | 200 m  | 80 m (UL1699B) |
| Max current of arc detection <sup>1</sup>  | 26 A   | 16 A (UL1699B) |
| Support Inverter Models:                   | SUN2000-12/15/17/20KTL-M0<br>SUN2000-36KTL (AFCI Version)<br>New:<br>SUN2000-12/15/17/20KTL-M2 <sup>2</sup><br>SUN2000-30/36/40KTL-M3 <sup>2</sup><br>SUN2000-100KTL-M1 <sup>2</sup> |                |

1. Function available for new models in 2020 Q3
2. Available in 2020. Q3